



Edison Road, Chells, Stevenage, SG2 0DF

WONDERFULLY PRESENTED and SPACIOUS Three Bedroom FAMILY HOME Located in UPPER CHELLS, Within Catchment to Chells Schooling. Features include FITTED KITCHEN/DINER, Lounge Area,, THREE DOUBLE BEDROOMS, Family Bathroom with Shower Cubicle, Delightful Rear Garden , Upper Chain Complete, VIEWING HIGHLY RECOMMENDED.

£350,000

Edison Road, Chells, Stevenage, SG2 0DF



- Wonderfully Presented and Spacious Three Bedroom Family Home
- Located in Upper Chells Within Catchment Schooling
- Fitted Kitchen/Diner
- Lounge Area
- Three Double Bedrooms
- Family Bathroom and Shower Cubicle
- Delightful Rear Garden
- Upper Chain Complete
- Viewing Highly Recommended

Entrance Hallway
10'9 x 4'8 (3.28m x 1.42m)

Fitted Kitchen/Diner
10'9 x 13'5 (3.28m x 4.09m)

Lounge Area
10'9 x 18'3 (3.28m x 5.56m)

Landing
8'9 x 3'1 (2.67m x 0.94m)

Bedroom One
10'9 x 12'3 (3.28m x 3.73m)

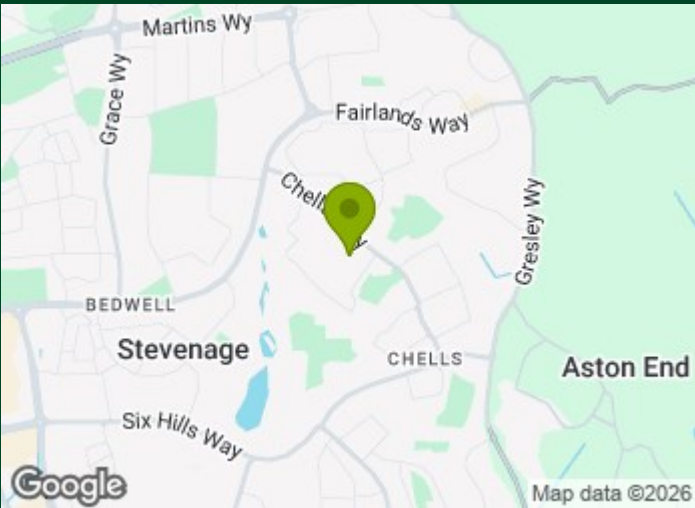
Bedroom Two
7'6 x 12'4 (2.29m x 3.76m)

Bedroom Three
10'8 x 7'11 (3.25m x 2.41m)

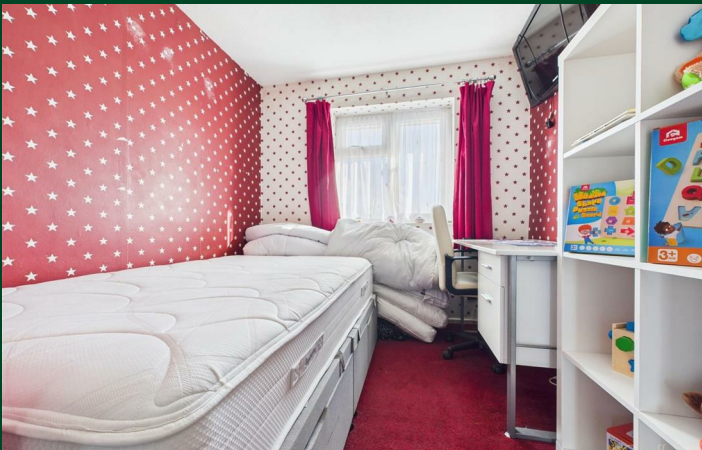
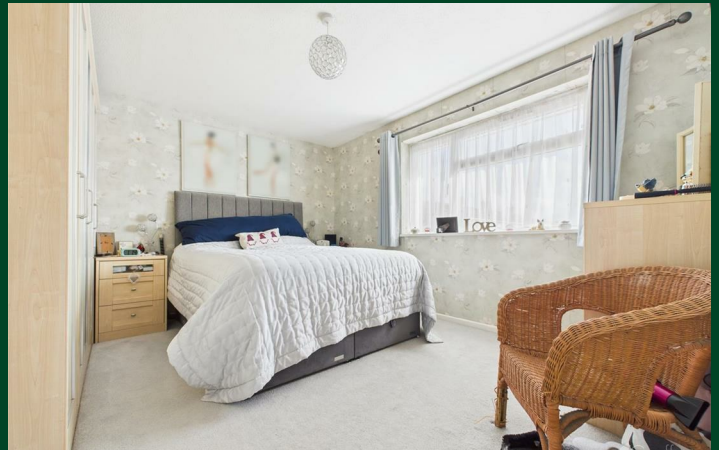
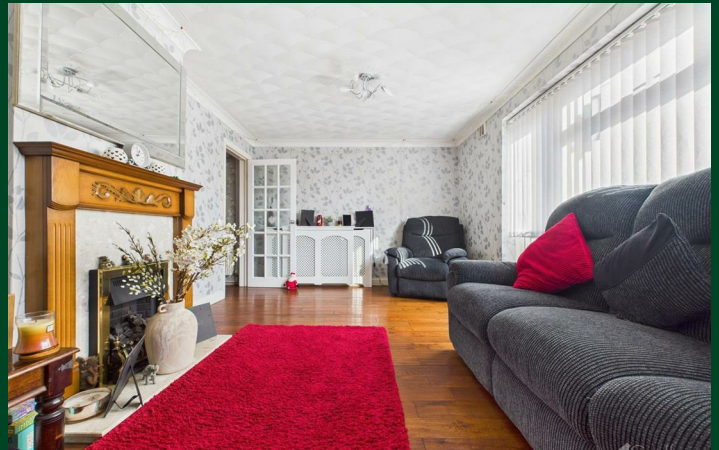
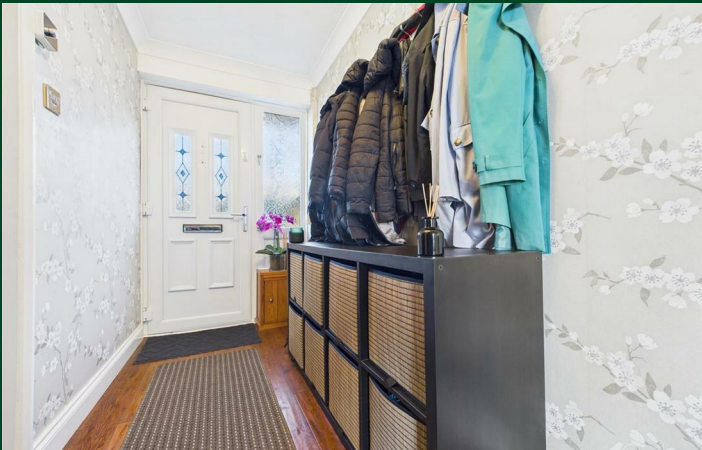
Fitted Bathroom and Shower

Rear Garden

Local Information
Local Information - Edison Road is situated in the exceeding desirable Upper Chells Area, which is situated a short distance from Fairlands Valley Park, The Glebe Shopping Complex and is within Easy Catchment to Noble, Marriots Lodge Farm and Camps Hill Schools.



Directions



Floor Plan



Council Tax Details

Band C

These particulars, whilst believed to be accurate are set out as a general outline only for guidance and do not constitute any part of an offer or contract. Intending purchasers should not rely on them as statements of representation of fact, but must satisfy themselves by inspection or otherwise as to their accuracy. No person in this firms employment has the authority to make or give any representation or warranty in respect of the property.

